



STAPLETON DERBY



Knowsley Road, Prescot, L35 0PA

£380,000

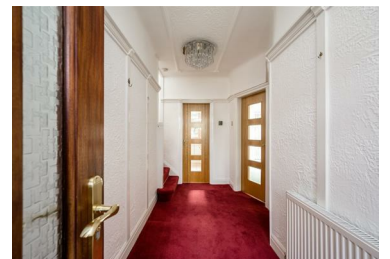


We are delighted to bring to the market this fantastic three bedroom traditional style semi detached home. Built in the 1930's the substantial property still retains its lovely character features in many rooms including high ceilings throughout.

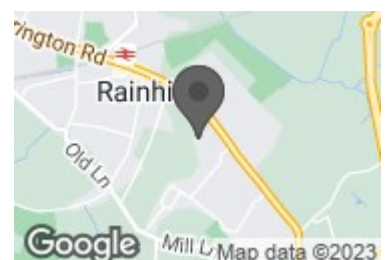
Situated in a premier area of Rainhill close to highly rated schools, shops and amenities, restaurants and bars plus within easy reach of the M62 motorway to Liverpool and Manchester and also rail links.

This spacious property briefly comprises porch, spacious entrance hall, lounge with bay window, second reception to the rear with views onto the lovely good size rear garden. The good size fitted kitchen has a range of wall and base units with complimentary work surfaces over and handy breakfast bar.

To the first floor three good size double bedrooms, bedroom three has fitted wardrobes and the benefit of access to a very spacious storage area which can also be accessed from the stairs. The spacious bathroom has both a bath and a separate shower cubicle with shower.



- Substantial Traditional Semi Detached
- Side Utility Area/Cloaks/wc.
- Spacious Rooms Throughout
- Garage & Driveway
- Sought After Location
- Three Double Bedrooms
- Lovely Character Features
- Good Size Rear Garden
- Freehold/No Chain
- Viewing Recommended



497 Warrington Road Rainhill, Merseyside, L35 0LR

Tel: Email: office@stapletonderby.co.uk www.stapletonderby.co.uk