



STAPLETON DERBY



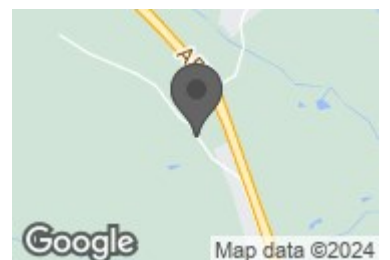
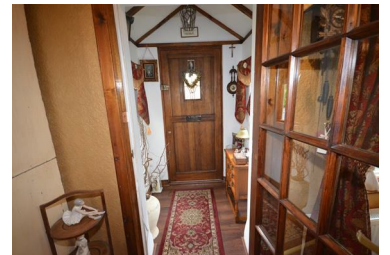
St Helens Road, Rainford, WA11 7QT

£319,995



Hill Top terrace built circa 1867, oozes all the character and charm one would expect, with views over farmland to the front and woodland to the rear. Internal inspection is highly recommended in order to fully appreciate the generous size accommodation, recently refitted bathroom, private rear block paved courtyard, lawn and flagged area with double garage, plus the farmhouse style kitchen and garden room. Briefly comprising entrance porch, lounge, dining room, garden room and kitchen to the ground floor. To the first floor there are three bedrooms and family bathroom. Gardens front and rear with secure remote control access to private courtyard with double garage. New PVC Georgian Grid Windows. VIEWING HIGHLY RECOMMENDED. NO CHAIN

- End Terraced Cottage
- Two Reception Rooms
- Garden Room
- Open Aspects
- Council Tax C
- Three Bedrooms
- Breakfast Kitchen
- Double Garage
- Viewing Recommended
- Freehold



Google

Map data ©2024

1 The Old Smithy, Church Road, Rainford, St Helens, WA11 8HD

Tel: 01744 889 999 Email: office@stapletonderby.co.uk www.stapletonderby.co.uk