



9 Bishopdale Drive, Prescot, L35 4QQ

Asking Price £265,000



**STAPLETON
DERBY**

Perfect Family Home Ready for Immediate Move-In
Freehold - No Chain

Presenting this generously sized three-bedroom, semi-detached home with a garage, proudly located on the outskirts of Rainhill Village. This remarkable residence offers a prime location, close to top-tier schools, dining options, shops, and a range of amenities that Rainhill has to offer. Its strategic positioning also grants convenient access to the M62 and M57 motorways, ensuring effortless travel to both Liverpool and Manchester.

This spacious property comprises a porch, hallway, open-concept living and dining area, kitchen, utility room, and a garage. On the first floor, you'll find three generously sized bedrooms and a family bathroom. Externally, the front offers off-road parking with the potential for expansion, while the rear boasts a spacious, private garden.

Don't miss the opportunity to view this property early. With a freehold title and no ongoing chain, it presents an appealing option for homebuyers.

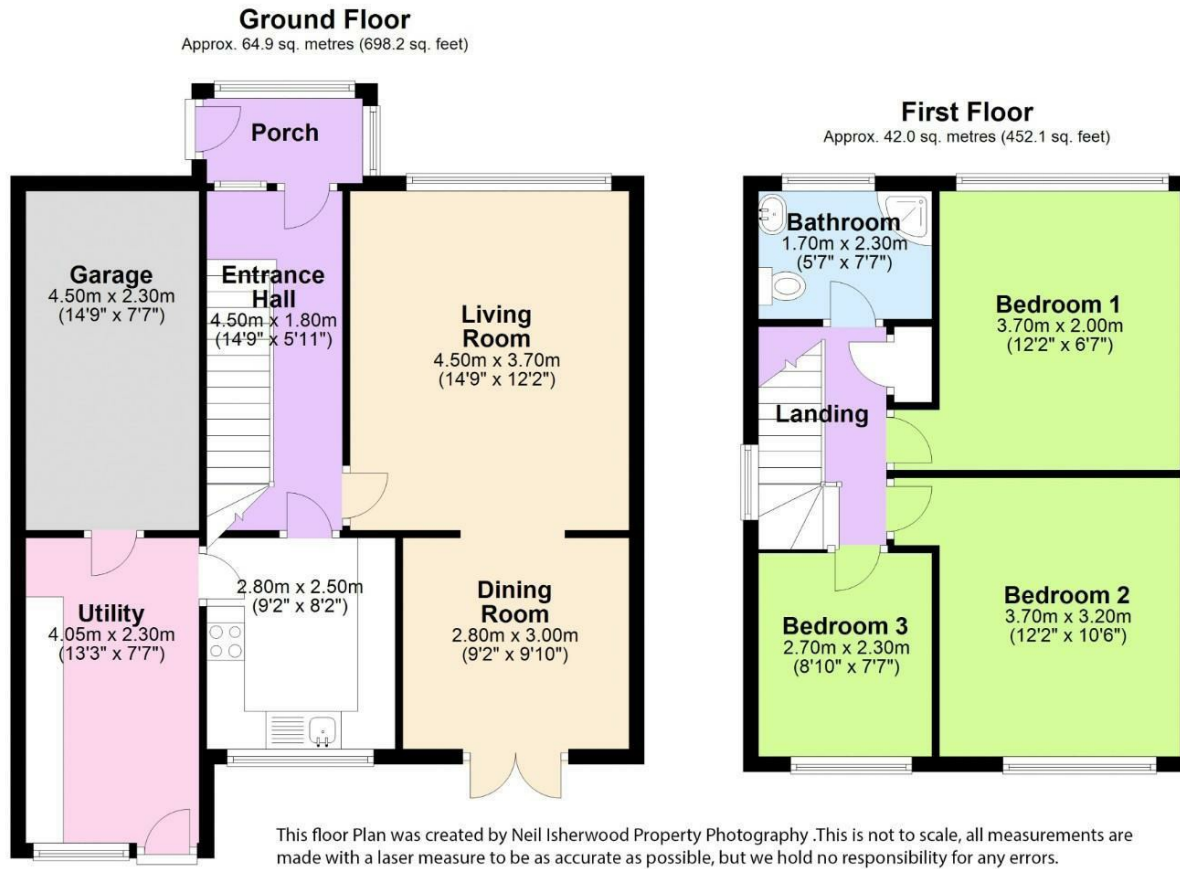




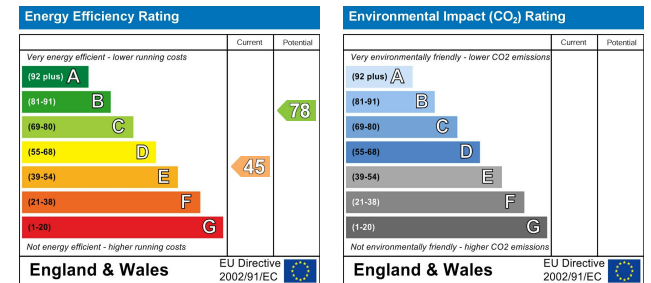




Stapleton Derby
 497 Warrington Road Rainhill, Merseyside, L35 0LR
 Tel: 0151 430 0717
 office@stapletonderby.co.uk
 www.stapletonderby.co.uk



Total area: approx. 106.9 sq. metres (1150.3 sq. feet)



IMPORTANT NOTICE TO PURCHASERS

We endeavor to make our sales particulars accurate and reliable, however, they do not constitute or form part of an offer or any contract and none is to be relied upon as statements of representation or fact. Any services, systems and appliances listed in this specification have not been tested by us and no guarantee as to their operating ability or efficiency is given. All measurements have been taken as a guide to prospective buyers only, and are not precise. If you require clarification or further information on any points please contact us. Fixtures and fittings other than those mentioned are to be agreed with the seller.