



# STAPLETON DERBY



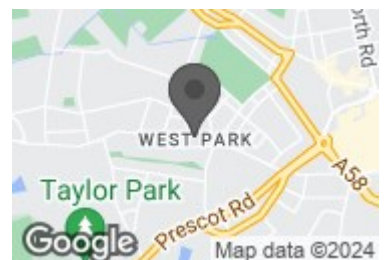
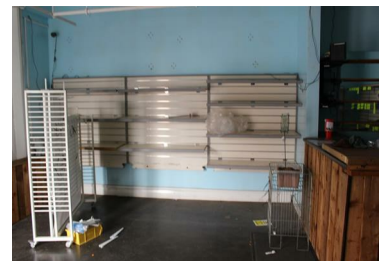
Cambridge Road, Merseyside, WA10 4HD

£550 PCM



COMMERCIAL UNIT - Situated in the popular area of Newtown. Stapleton Derby are pleased to bring to the market this well appointed shop premises and storage. Currently this is divided into a number of rooms, the location and surrounding mix of property provides potential for a multitude of uses. The property is also fitted with metal security shutters to both front and rear of the property. Free parking ensuring hassle-free access for customers and clients.

- SHOP PREMISES
- MULTITUDE OF USES
- REAR GARDEN/BRICK STORAGE AT THE REAR
- CLOSE TO MOTORWAY LINKS
- IDEAL FIRST BUSINESS SET UP
- BUSY LOCATION
- GAS CENTRAL HEATING
- EXCELLENT LOCATION PASSING TRADE
- VIEWING STRONGLY ADVISED



73-75 Corporation Street, St Helens, WA10 1SX

Tel: 01744 883 322 Email: [info@stapletonderby.co.uk](mailto:info@stapletonderby.co.uk) [www.stapletonderby.co.uk](http://www.stapletonderby.co.uk)