



9 Stapleton Avenue, Prescot, L35 4PR

Offers Over £235,000



**STAPLETON
DERBY**

Stapleton Derby is excited to present this exquisite semi-detached home with three bedrooms, ideally located in the heart of Rainhill. This residence offers convenient proximity to local schools, bars, and dining establishments, as well as easy access to the M57 and M62 motorways.

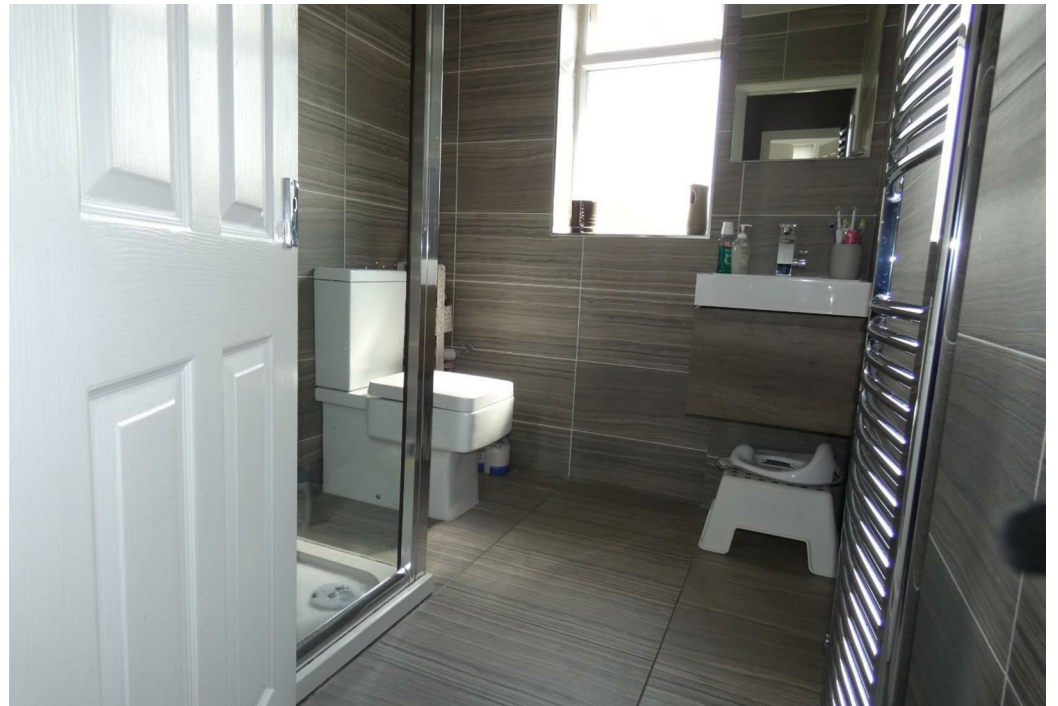
Upon entering, you'll find an inviting entrance hall that leads to a beautifully decorated and generously sized living room. The open-plan kitchen/diner at the rear of the property provides access to the charming rear garden.

The first floor of this home features a family bathroom and two spacious double bedrooms, along with a single bedroom. Outside, the property boasts a spacious lawn garden with a paved patio area in the rear, while the front includes a driveway for parking convenience.

We highly recommend arranging a viewing to fully appreciate this property's appeal. It falls under Council Tax Band C and is leasehold

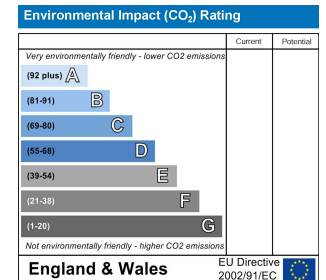
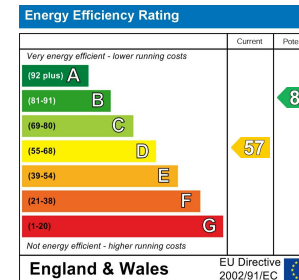
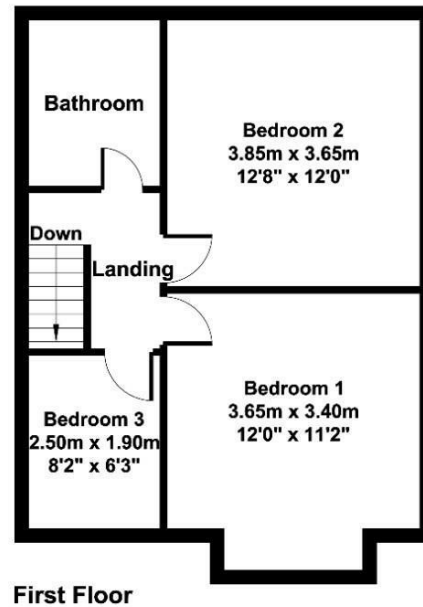
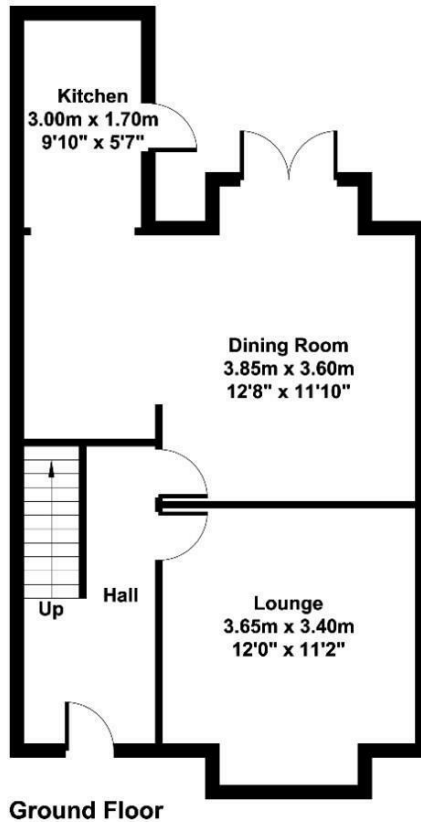








Stapleton Derby
 497 Warrington Road Rainhill, Merseyside, L35 0LR
 Tel: 0151 430 0717
 office@stapletonderby.co.uk
 www.stapletonderby.co.uk



IMPORTANT NOTICE TO PURCHASERS

We endeavor to make our sales particulars accurate and reliable, however, they do not constitute or form part of an offer or any contract and none is to be relied upon as statements of representation or fact. Any services, systems and appliances listed in this specification have not been tested by us and no guarantee as to their operating ability or efficiency is given. All measurements have been taken as a guide to prospective buyers only, and are not precise. If you require clarification or further information on any points please contact us. Fixtures and fittings other than those mentioned are to be agreed with the seller.