



14 Sherman Drive, Prescot, L35 6PW

Asking Price £245,000



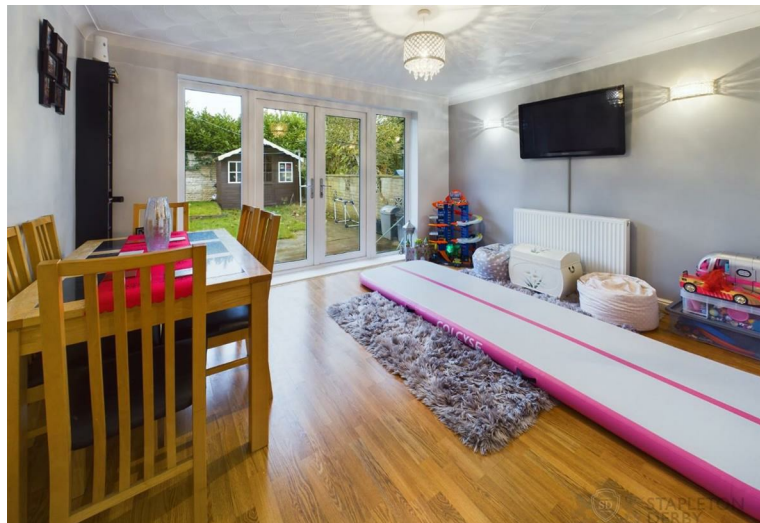
**STAPLETON
DERBY**

FAMILY HOME

Stapleton Derby are pleased to present this charming three-bedroom extended semi-detached property available for sale. Situated in a desirable location, this property is conveniently close to local amenities, especially schools and motorway connections.

The home features a welcoming porch, a spacious living room, a playroom with storage, a well-appointed kitchen, a utility room, and a dining area/sunroom. On the first floor, there are three well-proportioned bedrooms and a family bathroom. Externally, the property offers off-road parking to the front and a generously sized garden with a patio area at the rear.

This freehold property has an EPC rating of D.

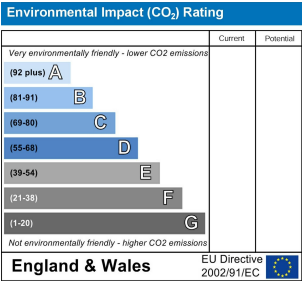
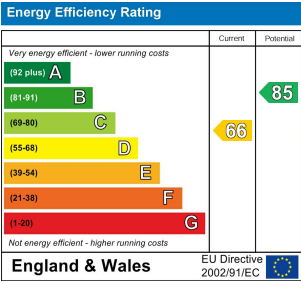








Stapleton Derby
 497 Warrington Road Rainhill, Merseyside, L35 0LR
 Tel: 0151 430 0717
 office@stapletonderby.co.uk
 www.stapletonderby.co.uk



IMPORTANT NOTICE TO PURCHASERS
 We endeavor to make our sales particulars accurate and reliable, however, they do not constitute or form part of an offer or any contract and none is to be relied upon as statements of representation or fact. Any services, systems and appliances listed in this specification have not been tested by us and no guarantee as to their operating ability or efficiency is given. All measurements have been taken as a guide to prospective buyers only, and are not precise. If you require clarification or further information on any points please contact us. Fixtures and fittings other than those mentioned are to be agreed with the seller.