



STAPLETON DERBY



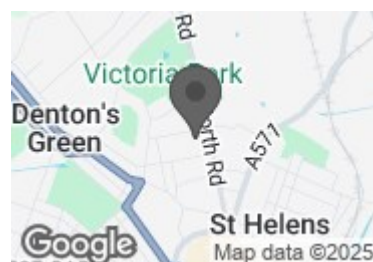
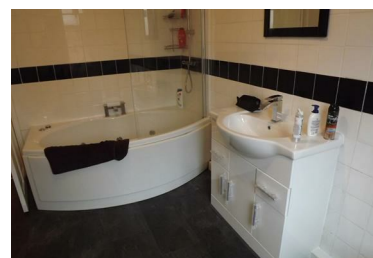
Argyle Street, St. Helens, WA10 2DB

£95,000



Available to landlords only, as the property is to be sold with a sitting tenant. A lovely Victorian style terraced property in the popular Cowley Hill district of St Helens. The ground floor has two large living areas, and a modern kitchen comes with added white goods and there is a large tidy yard to the rear. To the first floor are two bedrooms, both generous sizes. The town centre is just a stones throw away, and great transport links for commuting are close by too. Offered with no onward chain, a fabulous investment opportunity!

- VICTORIAN TERRACED
- TWO RECEPTION ROOMS
- FIRST FLOOR BATHROOM
- VICTORIA PARK NEARBY
- EPC - D
- LANDLORDS ONLY AS SOLD WITH TENANT IN SITU
- TWO BEDROOMS
- NO ONWARD CHAIN
- NEAR LOCAL AMENITIES



73-75 Corporation Street, St Helens, WA10 1SX

Tel: 01744 883 322 Email: info@stapletonderby.co.uk www.stapletonderby.co.uk