



112 Dragon Lane, Prescot, L35 2UH

Asking Price £155,000



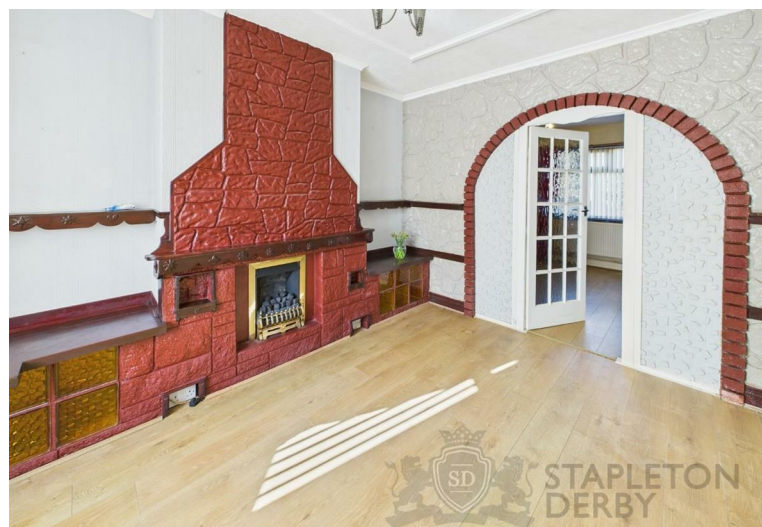
**STAPLETON  
DERBY**



Located in a highly sought-after area with excellent transport links, well-regarded schools, and close proximity to Whiston Hospital, 112 Dragon Lane presents a fantastic opportunity for buyers looking to add their own personal touch.

This two-bedroom semi-detached home is in need of modernisation and offers great potential. The ground floor comprises an entrance hallway leading to a spacious living room, a separate dining and kitchen area. Upstairs, there are two well-proportioned bedrooms and a family bathroom. Externally, the property benefits from off-road parking, paved areas, and side access, while the rear boasts a generously sized garden with a patio.

Offered chain-free and currently vacant, this home is ideal for those looking to renovate and create their perfect space. The property is offer FREEHOLD and EPC TBC

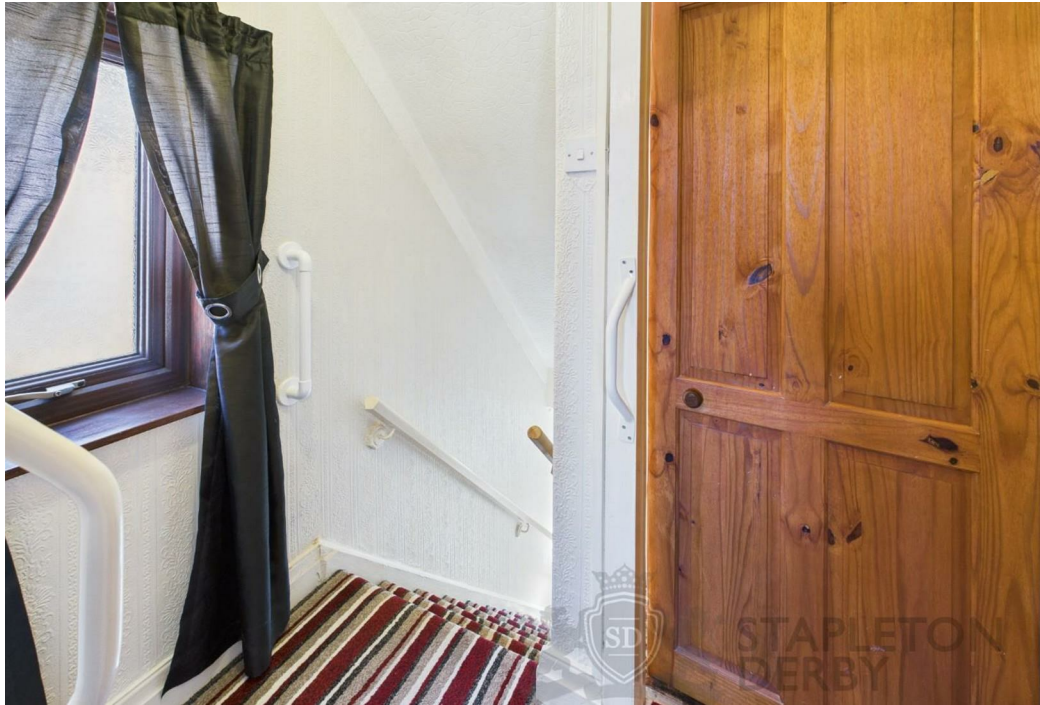






STAPLETON  
DERBY



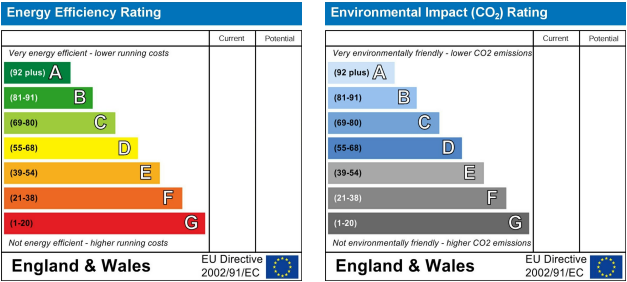






STAPLETON  
DERBY

Stapleton Derby  
497 Warrington Road Rainhill, Merseyside, L35 0LR  
Tel: 0151 430 0717  
office@stapletonderby.co.uk  
www.stapletonderby.co.uk



**IMPORTANT NOTICE TO PURCHASERS**

We endeavor to make our sales particulars accurate and reliable, however, they do not constitute or form part of an offer or any contract and none is to be relied upon as statements of representation or fact. Any services, systems and appliances listed in this specification have not been tested by us and no guarantee as to their operating ability or efficiency is given. All measurements have been taken as a guide to prospective buyers only, and are not precise. If you require clarification or further information on any points please contact us. Fixtures and fittings other than those mentioned are to be agreed with the seller.