



19 Dunbeath Avenue, Prescot, L35 0QH

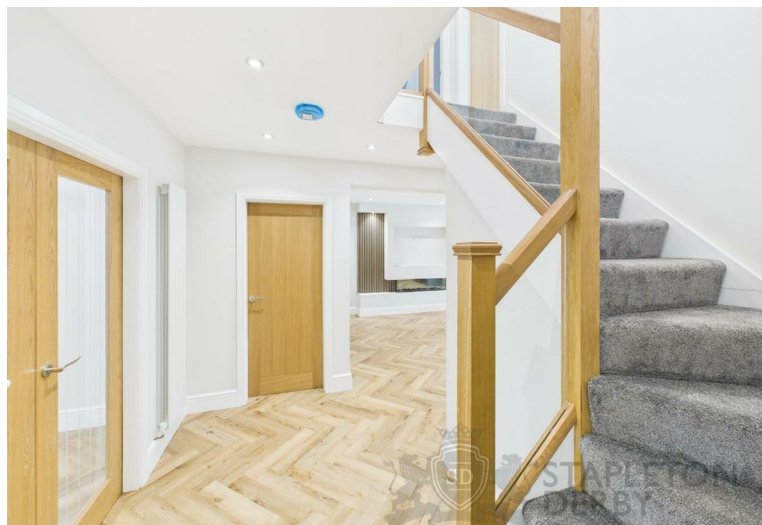
Asking Price £340,000



19 Dunbeath Avenue, is a fully renovated three-bedroom semi-detached home situated in the highly sought-after area of Rainhill. Ideally positioned close to local amenities, including excellent schools, shops, transport links, and major motorway connections, this stunning property offers both style and convenience.

Upon entering, the welcoming hallway sets the tone for the impeccable finish throughout. The ground floor features a downstairs WC, a well-proportioned dining room, and a lounge, all complemented by an unbelievable open-plan kitchen, dining, and lounge area. This exceptional space is enhanced by bifolding doors that seamlessly open onto the beautifully landscaped rear garden, creating an ideal setting for indoor-outdoor living. The first floor is equally impressive, with three generously sized double bedrooms and a truly exceptional family bathroom. All rooms lead off a striking double-height landing, which is flooded with natural light from the side window, adding to the sense of space and elegance.

Externally, the property offers off-road parking to the front, along with a lawn and garage. The rear garden has been newly landscaped, featuring a patio area and convenient rear garage access. Finished to an exceptionally high standard throughout, this remarkable home is not to be missed. The property is offered as FREEHOLD.





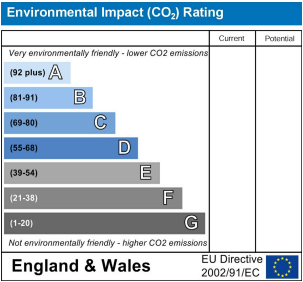
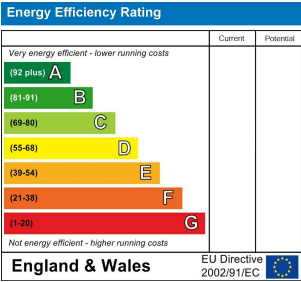
STAPLETON
DERBY





STAPLETON
DERBY

Stapleton Derby
497 Warrington Road Rainhill, Merseyside, L35 0LR
Tel: 0151 430 0717
office@stapletonderby.co.uk
www.stapletonderby.co.uk



IMPORTANT NOTICE TO PURCHASERS

We endeavor to make our sales particulars accurate and reliable, however, they do not constitute or form part of an offer or any contract and none is to be relied upon as statements of representation or fact. Any services, systems and appliances listed in this specification have not been tested by us and no guarantee as to their operating ability or efficiency is given. All measurements have been taken as a guide to prospective buyers only, and are not precise. If you require clarification or further information on any points please contact us. Fixtures and fittings other than those mentioned are to be agreed with the seller.