



31 Bishopdale Drive, Prescot, L35 4QQ

Asking Price £240,000



PERFECT FAMILY HOME – IDEAL FOR FIRST-TIME BUYERS OR INVESTORS

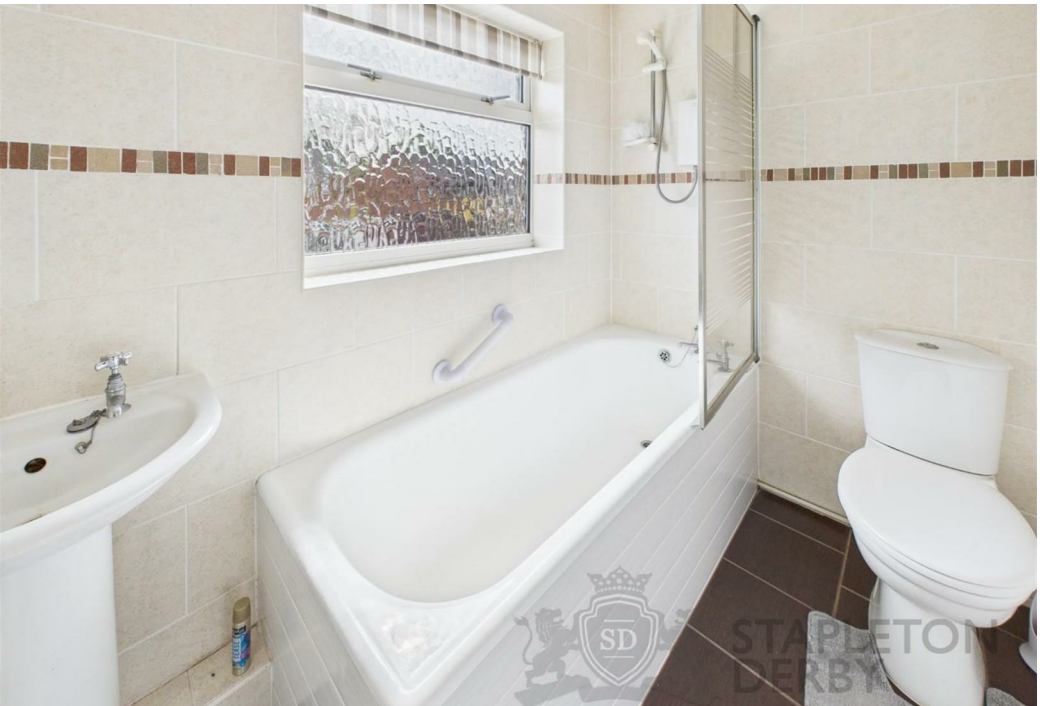
Stapleton Derby is delighted to present this three-bedroom semi-detached home, located in the heart of Rainhill. This well-maintained property offers easy access to local amenities and is conveniently situated near major motorways, making it ideal for commuters traveling to Liverpool or Manchester.

The ground floor features a welcoming porch, hallway, living room, dining area, conservatory and kitchen with garage access. Upstairs, you'll find three generously sized bedrooms and a family bathroom. The exterior boasts off-road parking at the front and a spacious rear garden with a patio area.

FREEHOLD – Early viewing is highly recommended to fully appreciate this property's potential!

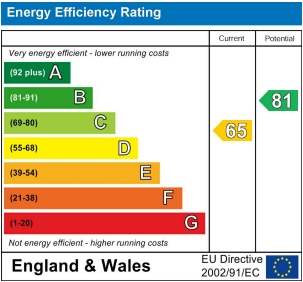








Stapleton Derby
 497 Warrington Road Rainhill, Merseyside, L35 0LR
 Tel: 0151 430 0717
 office@stapletonderby.co.uk
 www.stapletonderby.co.uk



IMPORTANT NOTICE TO PURCHASERS
 We endeavor to make our sales particulars accurate and reliable, however, they do not constitute or form part of an offer or any contract and none is to be relied upon as statements of representation or fact. Any services, systems and appliances listed in this specification have not been tested by us and no guarantee as to their operating ability or efficiency is given. All measurements have been taken as a guide to prospective buyers only, and are not precise. If you require clarification or further information on any points please contact us. Fixtures and fittings other than those mentioned are to be agreed with the seller.