



Windleshaw Road, St. Helens, WA10 6TD

£159,950

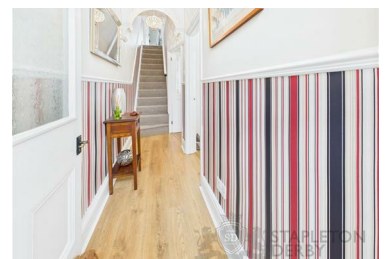


Welcome to this charming terraced house located on Windleshaw Road in the desirable area of Dentons Green, St. Helens. This delightful property boasts two spacious double bedrooms, making it an ideal choice for couples, small families, or those seeking a comfortable home.

As you enter, you are greeted by a welcoming entrance hall that leads to two well-proportioned reception rooms, perfect for both relaxation and entertaining. The ground floor also features a convenient utility room and a WC, adding to the practicality of the layout.

Upstairs, you will find two generously sized double bedrooms, along with a bathroom situated off the main landing. A skylight on the landing allows natural light to flood in, creating a bright and airy atmosphere.

- Spacious Mid Terrace Home
- Two Reception Rooms
- Perfect Blend Of Character & Contemporary
- Popular Family Location
- Walking Distance To Amenities & Great Transport Links
- Two Double Bedrooms
- Welcoming Entrance Hall
- Sun Trap Lengthy Rear Garden
- Courtyard Front Garden
- EPC-D



73-75 Corporation Street, St Helens, WA10 1SX

Tel: 01744 883 322 Email: info@stapletonderby.co.uk www.stapletonderby.co.uk