



11 Ryder Close, Prescot, L35 9JP

Asking Price £235,000



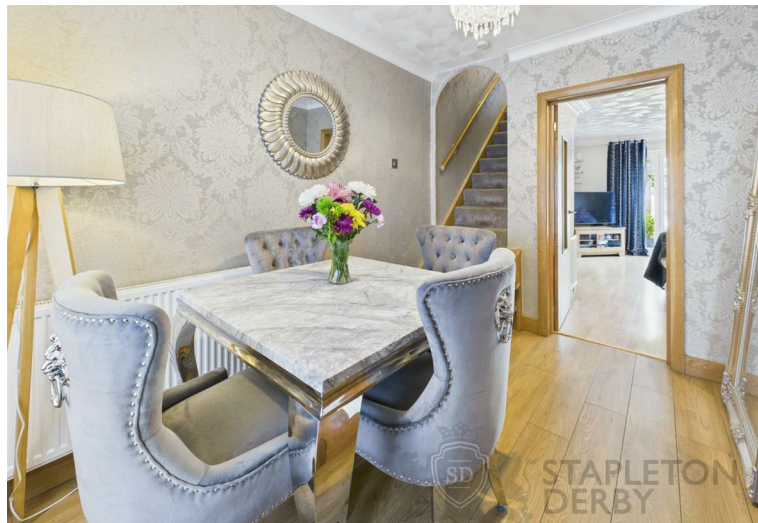


Ryder Close, Rainhill, Prescot, L35 9JP is a well-presented three bedroom semi-detached property, ideally situated in a quiet cul-de-sac close to a range of local amenities. Perfectly placed for access to Whiston Hospital, transport links and major motorway connections, this property offers both convenience and a peaceful residential setting.

The accommodation comprises a welcoming porch, entrance hallway, a fitted kitchen and a generously sized living room with views over the rear garden. To the first floor, there are three well-proportioned bedrooms and a modern family bathroom. Externally, the property benefits from a front lawn, off-road parking and gated side access. The rear garden is well maintained, featuring a lawned area and a patio, perfect for outdoor entertaining.

The property is leasehold and further details are available upon request. EPC D

Early viewing is highly recommended to fully appreciate what this lovely home has to offer.











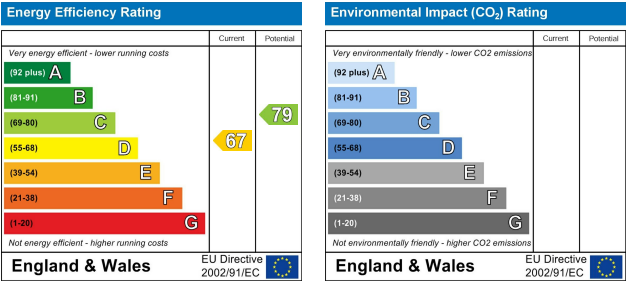




STAPLETON  
DERBY



**Stapleton Derby**  
 497 Warrington Road Rainhill, Merseyside, L35 0LR  
 Tel: 0151 430 0717  
 office@stapletonderby.co.uk  
 www.stapletonderby.co.uk



**IMPORTANT NOTICE TO PURCHASERS**  
 We endeavor to make our sales particulars accurate and reliable, however, they do not constitute or form part of an offer or any contract and none is to be relied upon as statements of representation or fact. Any services, systems and appliances listed in this specification have not been tested by us and no guarantee as to their operating ability or efficiency is given. All measurements have been taken as a guide to prospective buyers only, and are not precise. If you require clarification or further information on any points please contact us. Fixtures and fittings other than those mentioned are to be agreed with the seller.