



231 Speakman Road, St. Helens, WA10 6TH

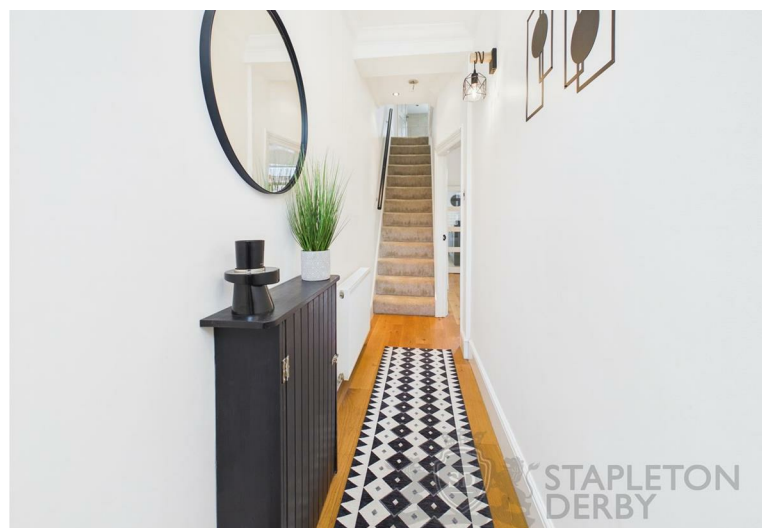
Asking Price £185,000



Nestled on Speakman Road in the desirable area of Dentons Green, St. Helens, this charming mid-terrace home has been refurbished to an exceptional standard, making it a perfect choice for those seeking a move-in ready property. The house is immaculately presented throughout, offering a welcoming entrance hall that leads into a spacious lounge, seamlessly connected to the dining room. French doors open out onto a delightful rear garden, which is a true sun trap, basking in sunlight from morning until night.

The property boasts a brand new, high-spec kitchen equipped with integrated appliances, which flows into a practical utility area. Additionally, there is a convenient ground floor WC, enhancing the functionality of the home. Upstairs, you will find two generously sized double bedrooms, both accessible from the landing, along with a large four-piece bathroom that features a separate bath and shower cubicle, providing a luxurious space for relaxation.

This home is offered with no onward chain, making it an ideal choice for those looking to settle in quickly. Its prime location ensures easy access to local amenities, transport links, and schools, catering to all your daily needs. With its turn-key condition, this property is ready for you to make it your own. Don't miss the opportunity to view this stunning home that combines modern living with comfort and convenience.





 STAPLETON
DERBY





STAPLETON
DERBY

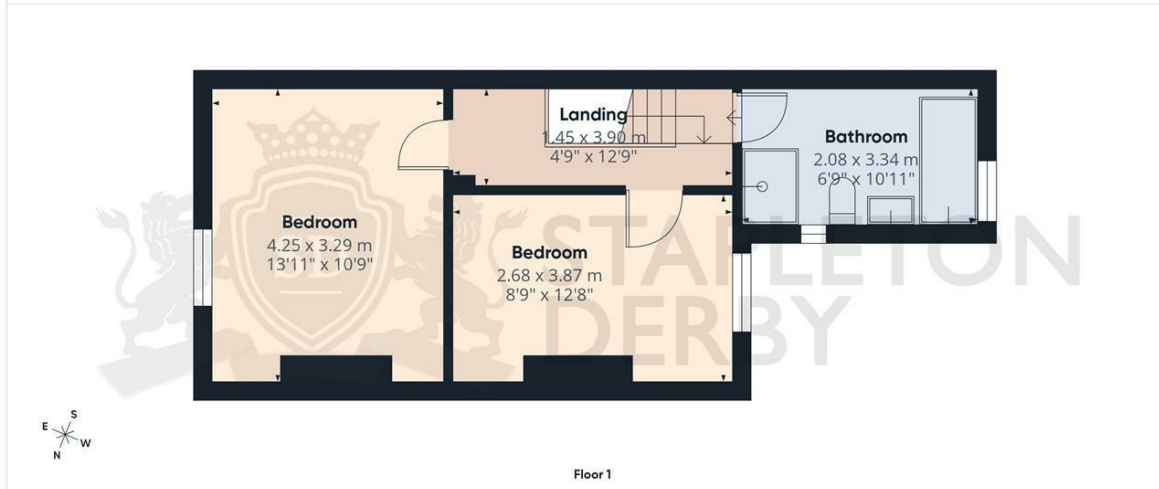
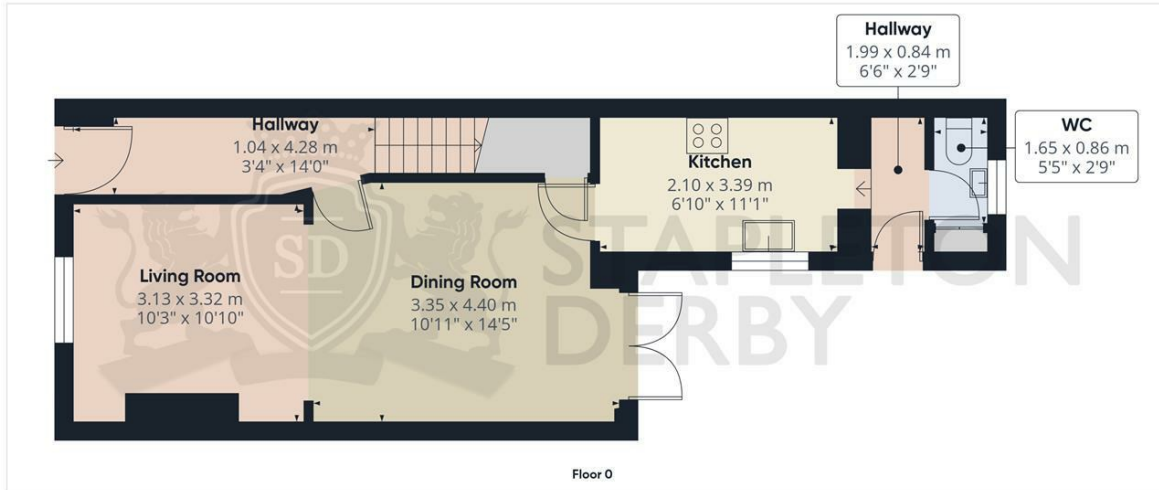
Stapleton Derby

73-75 Corporation Street, St Helens, WA10 1SX

Tel: 0151 430 0717 01744 883 322

info@stapletonderby.co.uk

www.stapletonderby.co.uk

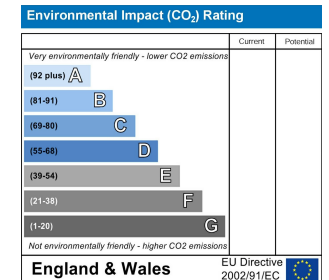
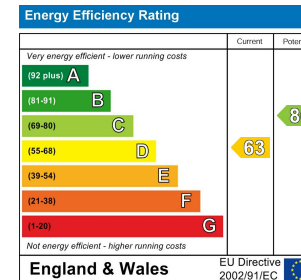
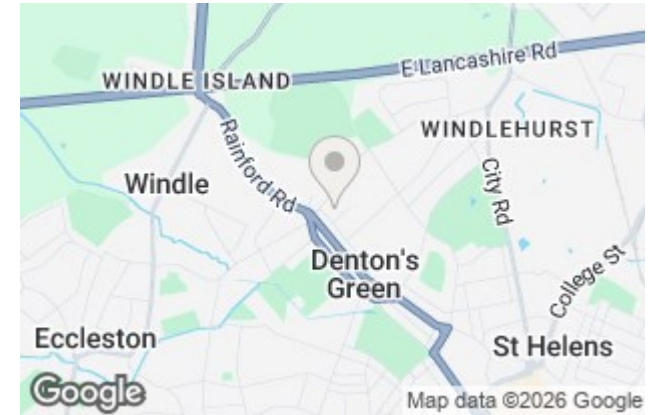


Approximate total area[®]
75.6 m²
813 ft²

(1) Excluding balconies and terraces

Calculations reference the RICS IPMS 3C standard. Measurements are approximate and not to scale. This floor plan is intended for illustration only.

GIRAFFE360



IMPORTANT NOTICE TO PURCHASERS

We endeavor to make our sales particulars accurate and reliable, however, they do not constitute or form part of an offer or any contract and none is to be relied upon as statements of representation or fact. Any services, systems and appliances listed in this specification have not been tested by us and no guarantee as to their operating ability or efficiency is given. All measurements have been taken as a guide to prospective buyers only, and are not precise. If you require clarification or further information on any points please contact us. Fixtures and fittings other than those mentioned are to be agreed with the seller.