



12 Kestrel Mews, Skelmersdale, WN8 6TD

Asking Price £290,000



**STAPLETON  
DERBY**

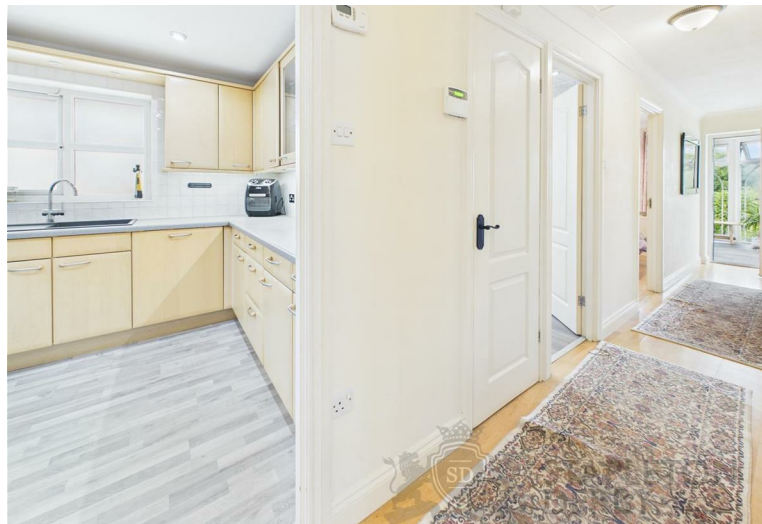
Tucked away in the tranquil Kestrel Mews cul de sac, this delightful detached true bungalow offers a perfect blend of comfort and convenience. Set on a generous corner plot, the property boasts stunning views of open fields, where you may even catch a glimpse of the local wildlife, including graceful wild deer.

Upon entering, you are welcomed into an open plan lounge and dining area, creating a warm and inviting space for relaxation and entertaining. The well-appointed kitchen seamlessly connects to this living area via the inner hall making it ideal for family gatherings. The bungalow features three spacious bedrooms, providing ample room for family or guests. The modern white suite bathroom adds a touch of elegance to the home.

One of the standout features of this property is the conservatory, which benefits from underfloor heating, ensuring a cosy atmosphere throughout the year. This additional living space is perfect for enjoying the garden views, regardless of the season.

The front and rear gardens are well-sized, offering plenty of outdoor space for gardening enthusiasts or for children to play. There are fruit bearing apple, pear and plum trees plus lawn and seating areas. With parking available for up to five vehicles and a garage, convenience is at the forefront of this property.

Situated close to local amenities and transport links and just a five minute stroll to the Beacon Country Park, this bungalow is ideal for those seeking a peaceful retreat without sacrificing accessibility. With no onward chain, this property is ready for you to move in and make it your own. Don't miss the opportunity to own this charming home in a picturesque setting.





STAPLETON  
DERBY





STAPLETO  
DERBY

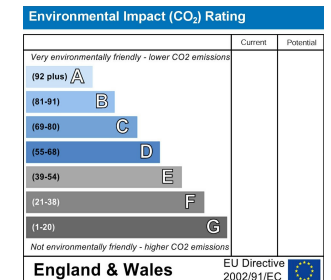
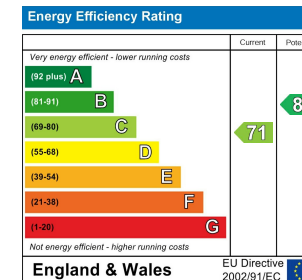
# Stapleton Derby

1 The Old Smithy, Church Road, Rainford, St Helens, WA11 8HD

Tel: 0151 430 0717 01744 889 999

office@stapletonderby.co.uk

www.stapletonderby.co.uk



## IMPORTANT NOTICE TO PURCHASERS

We endeavor to make our sales particulars accurate and reliable, however, they do not constitute or form part of an offer or any contract and none is to be relied upon as statements of representation or fact. Any services, systems and appliances listed in this specification have not been tested by us and no guarantee as to their operating ability or efficiency is given. All measurements have been taken as a guide to prospective buyers only, and are not precise. If you require clarification or further information on any points please contact us. Fixtures and fittings other than those mentioned are to be agreed with the seller.