



# STAPLETON DERBY



Windleshaw Road, St. Helens, WA10 6TP

Offers Over £210,000

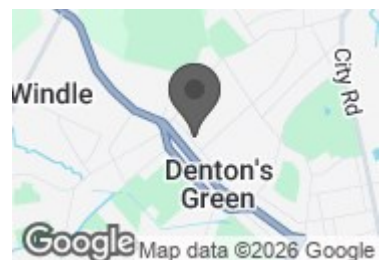
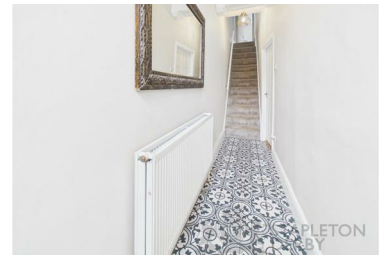


Situated at the top of Windleshaw Road in the desirable area of Dentons Green, St. Helens, this absolutely stunning and extended mid-terrace house is a true gem. With its unique ground floor extension, the property boasts a generous home gym, a utility room, and a convenient downstairs WC, making it perfect for modern living.

As you enter, you are welcomed into a hallway that leads into the open plan lounge diner that exudes warmth and style, ideal for both relaxation and entertaining. The high specification kitchen is a chef's delight, featuring contemporary fittings that enhance the overall appeal of the home. The pristine white suite shower room adds a touch of luxury, ensuring comfort for all residents.

This charming residence comprises three well-proportioned bedrooms, providing ample space for a growing family or those seeking a

- Stunning Mid Terrace House
- Open Plan Lounge Diner
- High Spec Kitchen
- Front & Rear Courtyard Garden
- Turn Key Condition
- Three Spacious Bedrooms
- Extension To Rear Providing a Large Gym Plus Utility Room
- Pristine White Suite Shower Room
- Highly Desirable Location
- EPC-C



73-75 Corporation Street, St Helens, WA10 1SX

Tel: 01744 883 322 Email: [info@stapletonderby.co.uk](mailto:info@stapletonderby.co.uk) [www.stapletonderby.co.uk](http://www.stapletonderby.co.uk)